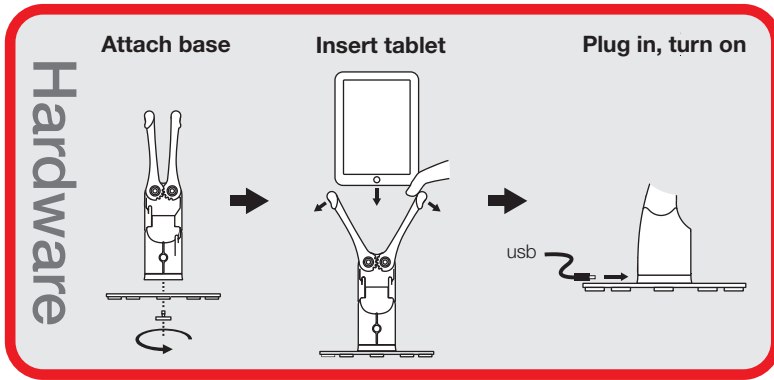
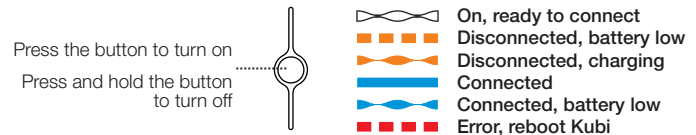


kubi quick start guide

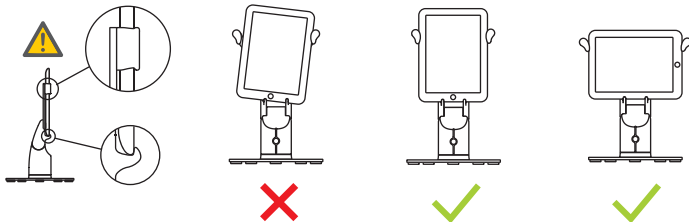
Kubi makes video calls easier and more engaging by turning Apple and Android tablets into web controlled telepresence robots that pan and tilt, letting you interact with people face to face.



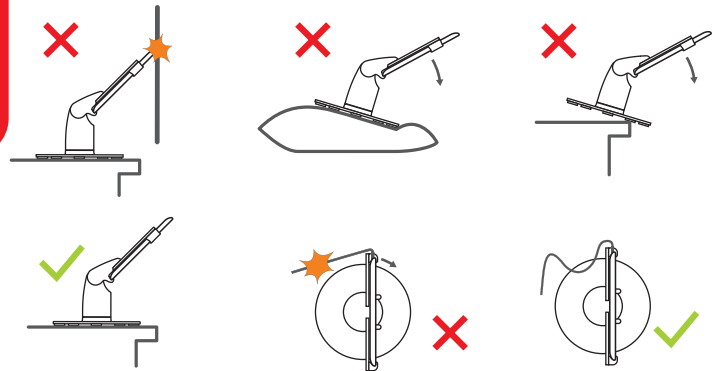
Control button & LED status indicator



Kubi Connect Software



Make sure the tablet is mounted securely



Make sure Kubi has plenty of room to move and is on a hard, flat surface

Setup and connect your **kubi** hardware first. Make sure your **kubi** tablet's Bluetooth is turned on and Wi-Fi or Cell Data is also on and connected to the internet, then turn on **kubi**.

Download the **kubi Connect App** for Apple iPad or Android, from the Apple App Store or Google Play and install it on the **kubi's** tablet. When you open the app, it will scan and connect to the **kubi** via Bluetooth with a unique **kubi ID (kubi Serial Number)**. Once **kubi** and the tablet are paired, **kubi** can be controlled remotely.

To Control kubi remotely:

Windows desktop / laptop: download and install the **kubi Connect Widget for Windows**. from the **www.kubiremote.com** website. **Apple iPad /iPhone or Android tablet / smartphone:** download the **kubi Connect App for Apple or Android**. Once the Widget/ App is installed, enter the **kubi ID** of the **kubi** you want to control, plus a display name, and you are in the driver's seat! Windows and Android versions have a control overlay that floats on top of your video call window. With Apple iPad, use a the iPad for video call with **kubi Connect App** in slide over mode, or run **kubi Connect App** on iPhone/Android phone to control **kubi**.

Visit **www.kubiconnect.com/** for for detailed **kubi** instructions and support information.